



Summary of Monthly Operations – May 2012

General

In total, the 95 Express Lanes:

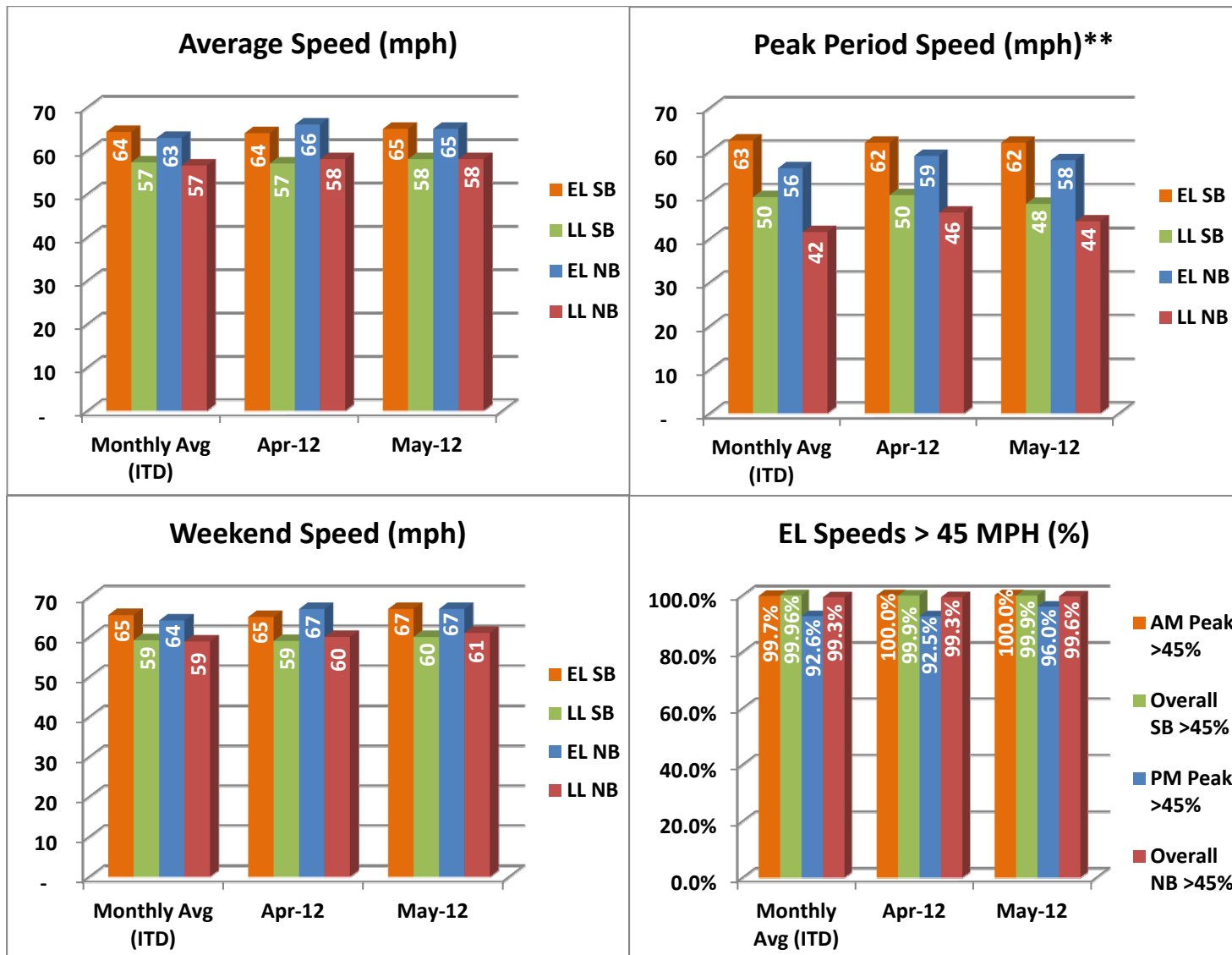
- ✓ Serviced 1,695,439 vehicle trips in May 2012 (8.80 million trips in 2012 to date), bringing the total since opening (December 5, 2008) to approximately 53.9 million trips.
- ✓ Had estimated monthly toll revenue of \$1.52 million in May 2012 (\$7.81 million in 2012 to date), bringing the total revenue to date to approximately \$42.4 million.
- ✓ Increased to a total of 8,794 registered vehicles, resulting in 33,778 toll exempt trips.

<u>May 2012 Statistics</u>	<u>Southbound</u>			<u>Northbound</u>		
Total Trips	850,433			845,006		
Exempt Trips	17,339			16,439		
Revenue						
	\$795,023			\$725,693		
Tolls						
- Range	\$0.00 - \$7.00			\$0.00 - \$7.00		
- Avg. Weekday	\$1.13			\$1.06		
- Avg. Peak Period**	\$1.83			\$2.34		
- Avg. Weekend	\$0.25			\$0.26		
- Avg. Off Peak	\$0.87			\$0.59		
- 85 th Percentile Weekday	\$2.50			\$2.25		
Volume (veh)						
	EL	LL		EL	LL	
- Avg. Weekday	30,447	110,233		30,060	99,697	
- Avg. Peak Period**	10,760	19,819		8,053	18,051	
Speed (mph)						
	EL	LL	Δ	EL	LL	Δ
- Avg. Overall	65	58	7	65	58	7
- Avg. Peak Period**	62	48	14	58	44	14
Operated Above 45 MPH						
	99.9%			99.6%		
Remained Open to Motorists						
	94.2%			94.6%		
Closed due to Planned Construction						
	4.1%			3.2%		
Closed due to Non-recurring Events						
	1.7%			2.2%		
EL (Express Lanes); LL (Local Lanes)						
**Peak Period is defined as 6-9 AM (southbound) and 4-7 PM (northbound).						



Operations/Traffic Statistics - Speed Data

** Peak Period is defined as 6-9 AM (southbound) and 4-7 PM (northbound).

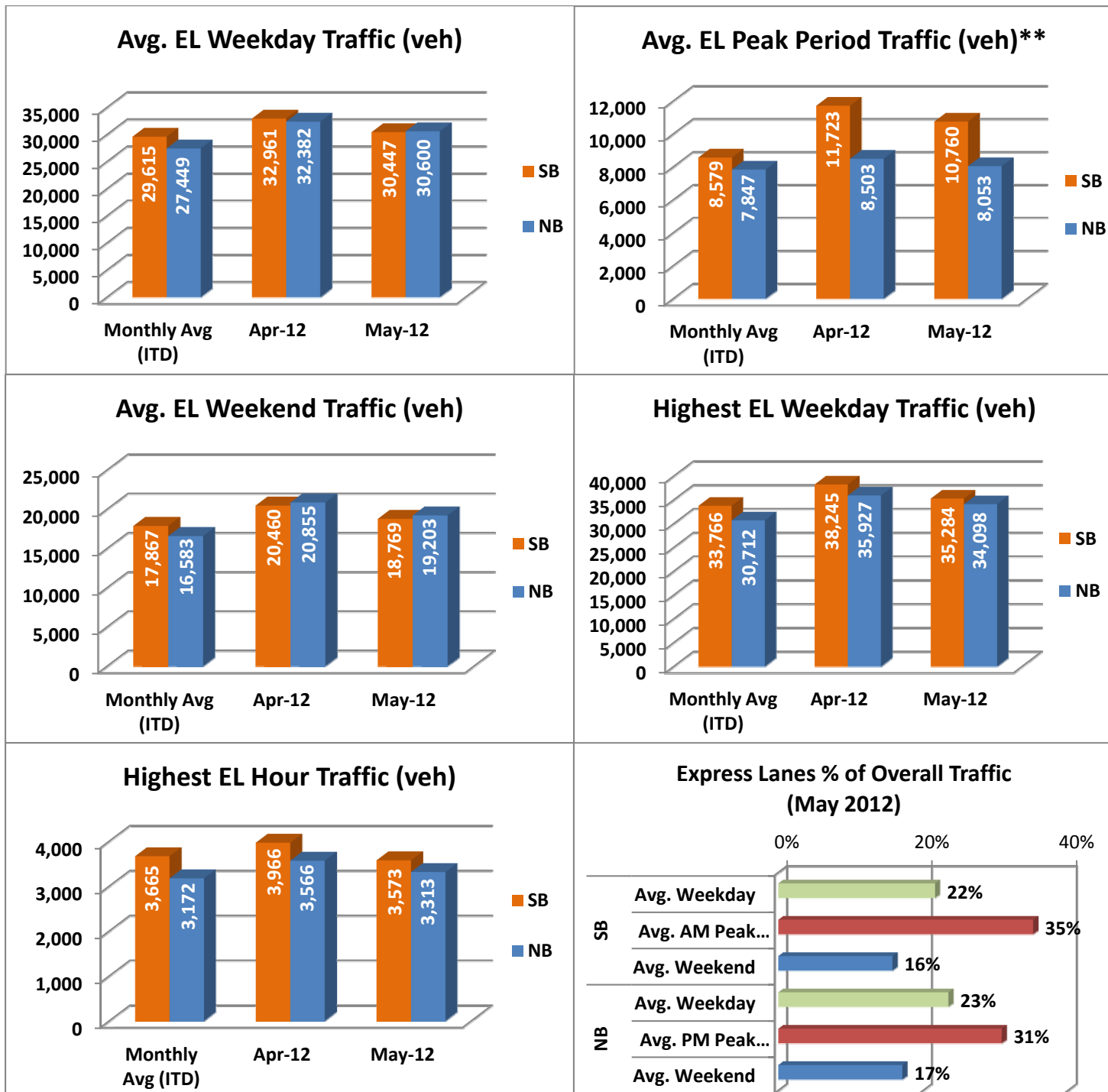


NOTE: ITD = Inception to Date



Operations/Traffic Statistics - Volume Data

** Peak Period is defined as 6-9 AM (southbound) and 4-7 PM (northbound).

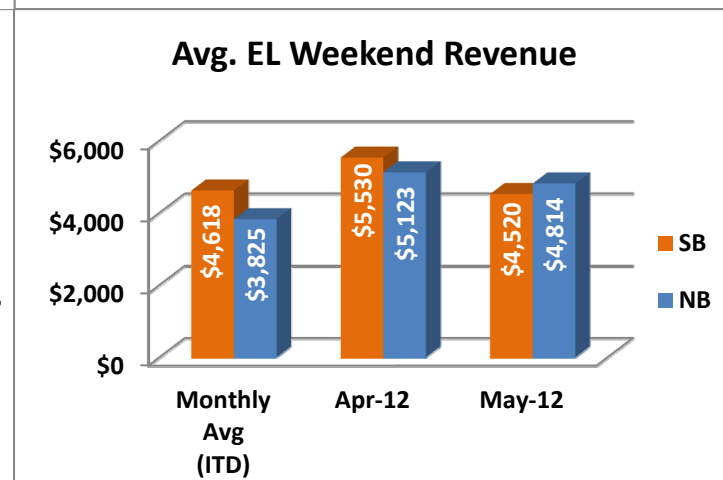
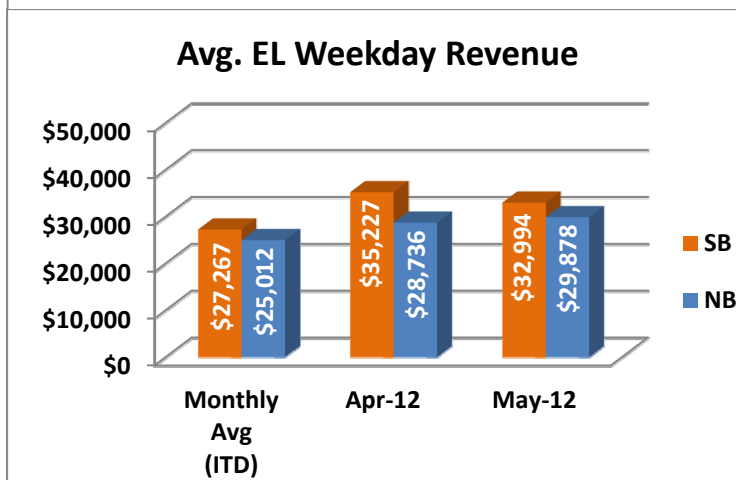
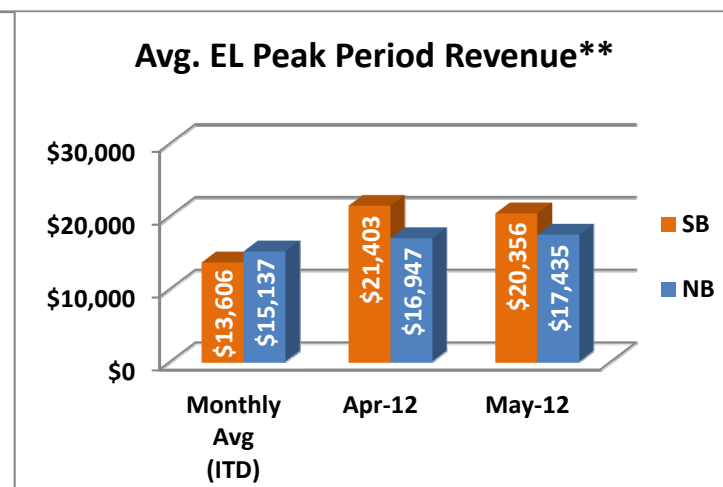
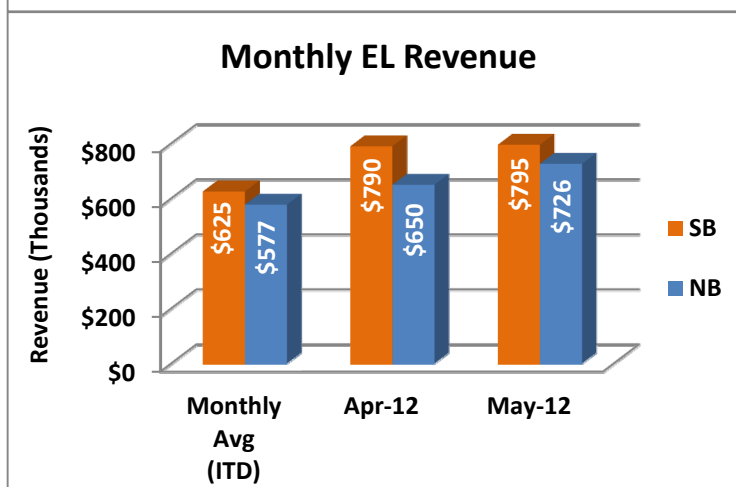
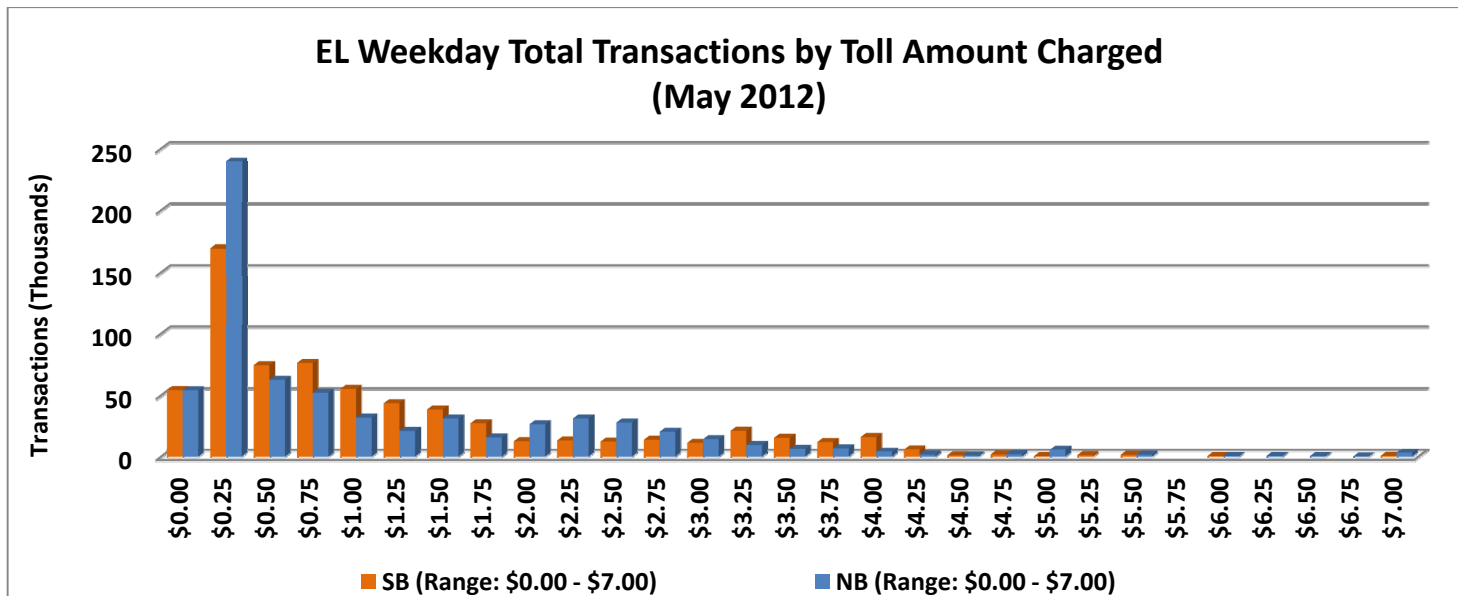


NOTE: ITD = Inception to Date



Revenue/Tolls Statistics

** Peak Period is defined as 6-9 AM (southbound) and 4-7 PM (northbound).

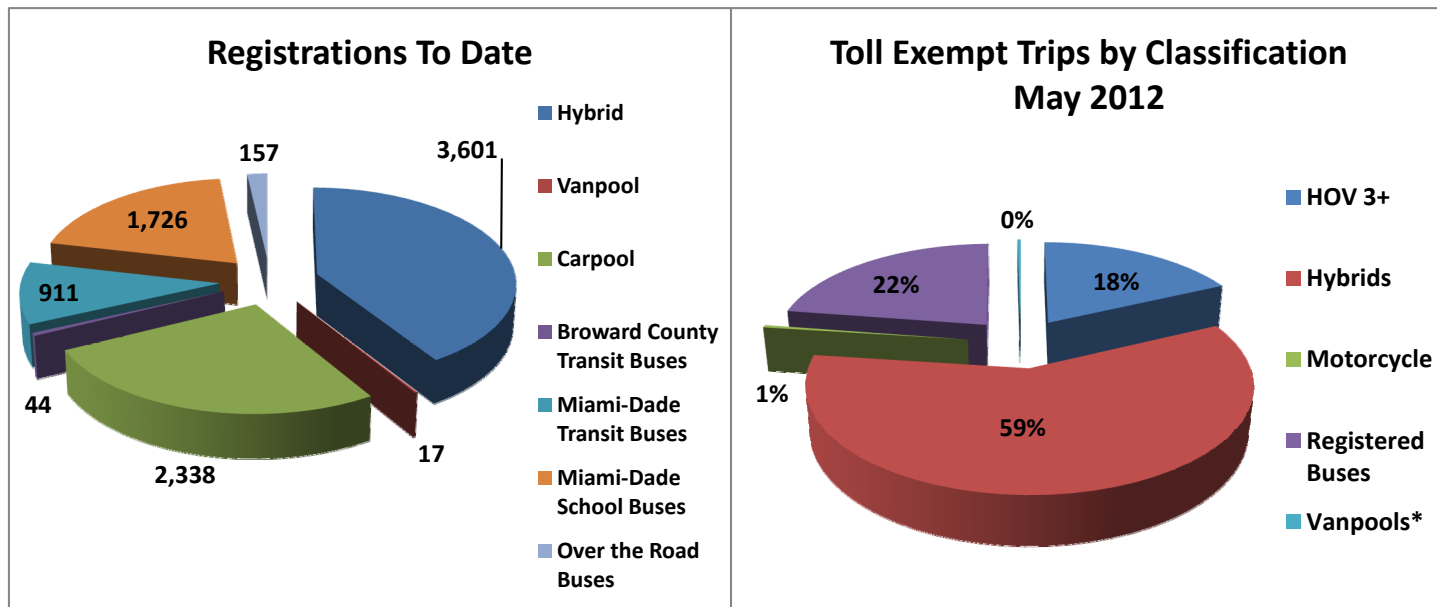


NOTE: ITD = Inception to Date



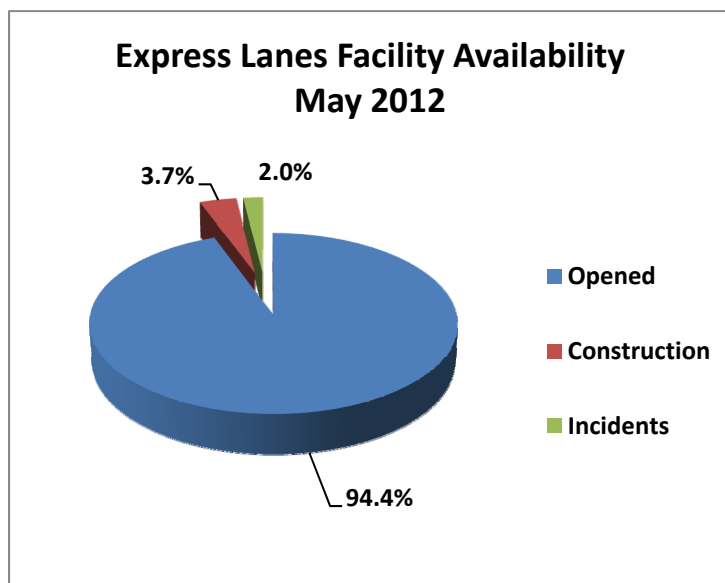
Registrations—Toll Exempt Trips

The total registrations through May 2012 increased to 8,794. The 33,778 Toll Exempt Trips for this month are shown by classification below.



*Note: a portion of the Vanpool data is included within Registered Buses.

Facility Availability



The entire 95 Express lanes (both directions) were open to motorists 94.4% of the time, while closed 3.7% due to 12 planned construction/maintenance events (each lasting 4 hours, 35 minutes in duration on average) and 2.0% due to 134 non-recurring events (each lasting just under 13 minutes in duration on average).